

A snow leopard is lying in a snowy mountain landscape. The leopard is the central focus, resting on a patch of snow. The background is a vast, snow-covered slope with scattered rocks and small, dry, brown shrubs. The overall scene is a high-altitude, winter environment.

SNOW LEOPARDS OF THE HIMALAYAS

FEB-MARCH
2026



SNOW LEOPARD SAFARI

27th February – 10th March 2026
COST: \$8995 USD

Join Bobby-Jo Safaris on an unforgettable journey to Ladakh, India, on an incredible expedition to photograph the elusive snow leopard in its natural habitat.

DESTINATIONS:

DELHI

Delhi, the capital city of India, is a bustling metropolis that seamlessly blends the old world charm with the modern-day amenities. From historic monuments like the Red Fort and Qutub Minar to vibrant markets like Chandni Chowk and Connaught Place, Delhi offers an array of experiences for travellers.

LEH

Leh is a stunning destination that boasts breathtaking landscapes, ancient monasteries, and an authentic Tibetan culture. Leh has a peaceful atmosphere, outdoor activities such as trekking and river rafting, and the opportunity to interact with friendly locals. Whether you are seeking adventure or spiritual enlightenment.

MANGYU

Nestled in the heart of the Himalayan mountains, Mangyu Valley is a paradise for nature enthusiasts and wildlife lovers alike. Home to a thriving population of elusive snow leopards, this remote valley offers a unique opportunity to witness these majestic creatures in their natural habitat.

MAJOR SPECIES LIKELY
TO BE COVERED:

Snow Leopard

Asiatic Ibex

Himalayan Fox

Blue sheep

Himalayan Tahr

Urial

Golden Eagles

Chukor

Lammergeier

Tibetan Partridges



SAFARI ITINERARY

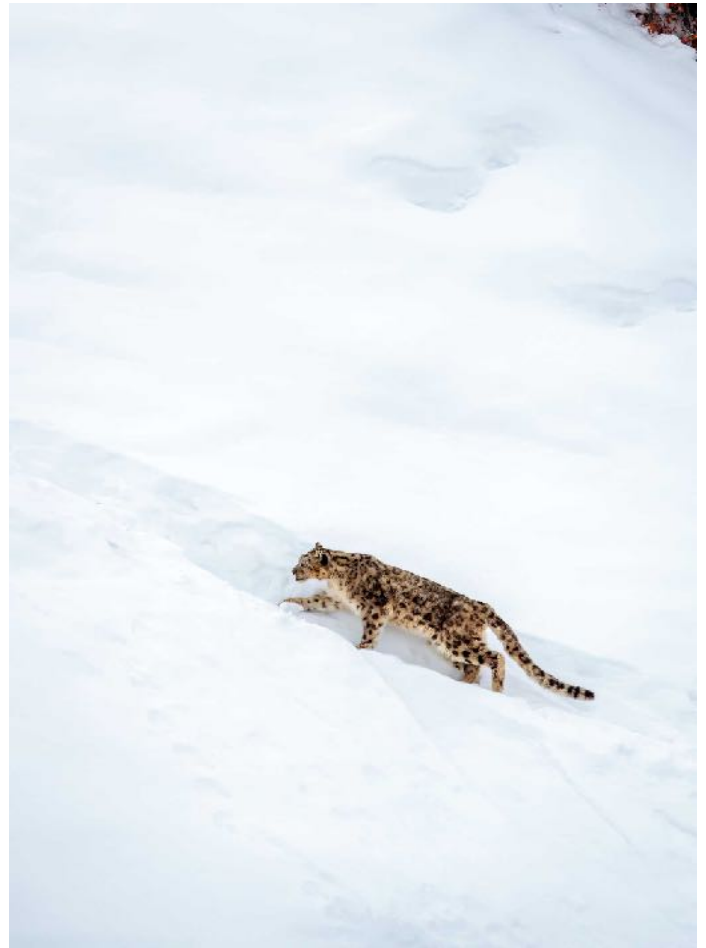
DAY 1: DELHI
27TH FEBRUARY 2026

Arrive in New Delhi, India. It is here you will meet your hosts Bobby-Jo & Anurag and begin your exciting Snow Leopards of the Himalayas. I would recommend arriving on the 26th February and overnight in Delhi. This is not included in the safari package. Please inform us if you would like to book accommodation for you and also airport transfers.

DELHI (270 m) – MANGYU (3500 m)

Arrive at Leh from Delhi and a complete day at leisure for acclimatisation. In the evening meet with the local guide and we will have a briefing about our safari with any new updates. We will take a short visit to Leh Market in the evening (optional).

Overnight at our hotel accommodation (twin share).



DAY 2: LEH
28TH FEBRUARY 2026

Today is another relaxing day for acclimatization to Ladakh's high altitude. Those interested in the spirit and culture of the region can visit some beautiful monasteries around Leh- Shey Castle, Thiksay Monastery, Stock Palace, Sindhu Ghat and Shanti Stupa.

Afternoon walk to Leh Market for acclimatization. Overnight at our hotel accommodation (twin share).

DAY 3: WARI LA PASS
1ST MARCH 2026

Today we will visit Wari La Pass to try our luck at tracking the Himalayan Lynx. We will return back to Leh later in the day.

Overnight at our hotel accommodation (twin share).

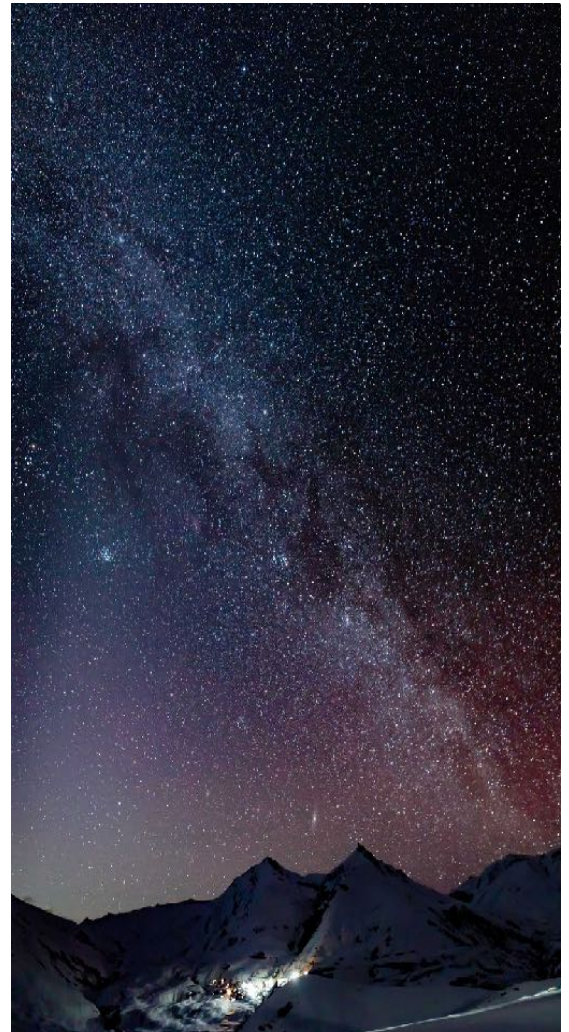
All meals included.



MANGYU

Mangyu is a remote and picturesque village nestled in the heart of the Himalayas. It is renowned for its abundant natural beauty, lush forests, and soaring mountains. Amidst this breathtaking scenery, the elusive snow leopards roam freely, making their home in the dense forest and steep cliffs.

These majestic creatures are the pride and joy of Mangyu, and the village is committed to preserving their habitat and protecting them from harm. Visitors to Mangyu can experience the thrill of spotting these rare and magnificent animals as they play and hunt in their natural habitat, surrounded by the stunning scenery of the Himalayas.



DAY4: MANGYU
2ND MARCH 2026

Today marks the beginning of our Snow Leopard Expedition with a drive to Mangyu (3500m). The drive is about two hours.

On reaching the village, we check in to our homestay and after lunch, scan the surroundings for the Snow Leopard.

Overnight at our lodge (twin share).

DAY 5 - 10: MANGYU/ULLEY
3RD - 8TH MARCH 2026

We will spend the next 6 days exploring the valleys of Mangyu/Ulley looking for wildlife. We will spend time photographing incredible landscapes and wildlife. Bobby-Jo will be on hand to assist you with your photography.

Overnight at our lodge (twin share with en-suite facilities).

All meals are included.



DAY 11: LEH
9TH MARCH 2026

Today we farewell Mangyu and head back to Leh.

Overnight at our hotel accommodation (twin share).

All meals are included.

DAY 12: DELHI
10TH MARCH 2025

Today we farewell Leh and fly back to Delhi.

Accommodation can be arranged in Delhi at your request.

Breakfast included.

THE SNOW LEOPARD

Snow leopards are one of the rarest and most mystical mammals in the world. They are native to the steep and rugged high-altitude areas of Central Asia, where their silvery-grey coats blend perfectly into the stony, snowy terrain, making them difficult to spot.

Their characteristic long, thick tail helps them to balance on rocky cliffs and ledge, while their large paws with fur-covered soles allow them to walk silently on the snow.

Snow leopards are solitary creatures with long sharp claws and a muscular body that allows them to take down prey twice their size. Unfortunately, these majestic animals are endangered due to habitat loss, illegal poaching, and decreasing prey populations.





TREKKING DAY:

Around 5-6 Km of Trekking every day from Morning to Evening. Breakfast at the Base camp before departure. Lunch will be served in the field. Dinner at Base camp on all days. Porters will be assigned to every individual for carrying their photography equipment like tripods and cameras. If the roads are clear and the location is reachable, we will travel by vehicle to the nearest possible location.

FACILITIES:

Our accommodation has hot water, heating and private bathrooms.

MEDICAL/ SAFETY INFORMATION:

We carry and provide an extensive medical box with basic first aid and there are portable oxygen cans available in the accomodation only for emergencies. It is very important to acclimatise at Leh upon arrival and we do strongly recommend complete rest on day 1 and half day rest on day 2. It is also recommended to drink lots of water to prevent dehydration.

Please be aware that the snow leopard expedition requires some level of physical fitness including a walk of 3-5 km in the snow on an occasional basis.

COST INCLUDES

Airport and road transfers

Accommodation and meals as specified

Photographic coaching by Bobby-Jo

Wildlife activities

All meals and snacks on board

Bottled water whilst travelling

COST EXCLUDES

International flights and visas

Guide and lodge staff tips

Travel and Medical Insurance

Items of a personal nature

Drinks

Laundry

Internal flights return Delhi/Leh

BOOKING INFORMATION

To book on this exciting safari please fill in the booking form provided.

Please take the time to read and understand all the tour terms and conditions that have been emailed to you.

In order to confirm a booking a **30%** non-refundable deposit is also required.

The final balance payment is then due **90 days** prior to the safari start date.

In the event that you may have to cancel your safari booking then this cancellation notice will need to be made in writing and

For cancellations made **more than 90 days** prior to start date: **30%** cancellation penalty will apply (i.e. full deposit).

For cancellations made **less than 90 days** prior to departure date: **100%** cancellation penalty will apply (i.e. the full booking cost).

WHY IS YOUR DEPOSIT NON-REFUNDABLE?

Sometimes things just don't work out. Plans made this year may need to be changed for medical or personal reasons. However, as soon as you confirm your place with Bobby-Jo Safaris your 30% deposit is immediately distributed amongst the many lodges, camps & suppliers that are used to make up a successful and memorable safari. It locks in the required services for particular dates often in peak season that the camps or suppliers cannot then offer to other travellers.

Your decision to change your plans might be made months out from the start and often travellers will question – Why can't you just get someone else to take my spot? It is a valid question but sometimes not that easy. The moment we secure those services we are locked in for the safari arrangements for our whole group. Permits & park passes are issued and if we are unable to find other travellers to fill a cancelled spot then Bobby-Jo Safaris is left with paid services and no one to fill them. Additional marketing and promotion expenses are also incurred trying to find other interested travellers.

TRAVEL INSURANCE

For every traveller that participates in any Bobby-Jo Safaris experience it is a non-negotiable requirement that they purchase and carry a comprehensive travel insurance policy.

It is advised this policy is taken out at the time of paying your deposit to cover you for any unfortunate or unforeseen events either before or during the tour that may affect your plans and therefore could possibly cover cancellation costs incurred.

As outlined in Why is your deposit non-refundable? the 30% deposit required to secure your place on a specific safari is non-refundable. If your plans have to be cancelled due to a medical issue or personal reason that is covered under your travel insurance policy then a claim can be made via your travel insurance provider and they will assess whether you qualify for a refund through your travel insurance policy. Please note that travel insurance policies do not process claims or issue refunds should a traveller change their mind or just want to change their plans.

Bobby-Jo Safaris will not be liable for any costs resulting from any traveller's failure to purchase sufficient travel insurance and all travellers participating in any tour are required to sign the booking form at the end of this document containing our full terms and conditions.

VACCINATIONS

Bobby-Jo Safaris also recommends visiting your personal GP or travel vaccination service as soon as booking your safari to discuss your personal requirements that may be required in the form of injections or medications whilst travelling.

Vaccinations and medications will vary from person to person and only your GP or medical service can provide up to date and accurate information for your specific needs. Included in these discussions should be topics such as but not limited to Malaria, Yellow Fever & Hepatitis etc.

ABOUT BOBBY-JO SAFARIS

Bobby-Jo Safaris has been created by Bobby-Jo Vial who is incredibly passionate about wildlife and conservation.

Bobby-Jo has been travelling to and hosting safaris in Africa and around the world for almost two decades and in the process, has developed a network of contacts and relationships with camps, safari guides and local safari operators which allow us to organise your safari with trusted and reliable local operators.

Bobby-Jo Safaris has been developed to deliver value-based wildlife photography safaris to some of the most amazing wildlife habitats left on the planet with a genuine focus on quality and providing all guests a real value for money experience.

Many of our safaris will make a genuine difference to wildlife conservation by visiting specific projects and providing guests with a unique insight into on-the-ground projects and raising the funds necessary to continue this important work.

For more information on Bobby-Jo Safaris please visit our website: www.info@bobbyjosafaris.com

MEET YOUR HOSTS

Bobby-Jo is incredibly passionate about Africa and its wildlife.

Her professional and talented works have inspired many people to take an interest in wildlife and conservation and her laid back approach and bubbly personality see many people loving to travel with her and rebooking time and again on her next safari adventure.

Her images have featured in publications around the globe including Sydney Morning Herald, The Age, The Daily Telegraph, The Guardian, The Times, The New York Post, Huffington Post, Paris Match, Hello Magazine and Africa Geographic.

A publication of her own titled Reflections of Elephants was released by Melbourne Books in August 2016 coinciding with World Elephant Day. This book features many of her favourite elephant images and raises funds for the protection of some of the last Tuskers of Africa via her connection to The Askari Project.

When not on safari, Bobby-Jo work hands on with wildlife and is involved with wildlife conservation projects. As a qualified senior zoo-keeper of nineteen years, her perception and insight into animal behaviour in the wild enables guests to capture unique and endearing images. Bobby-Jo has developed an ability to often interpret animal behaviour which leads to very special photographic opportunities. You can see more of Bobby-Jo's work at www.bobbyjosafaris.com



Anurag found his true calling in wandering the tiger reserves of Northern and Central India and exploring their rich flora and fauna.

With a course in wildlife conservation conducted by the Wildlife Institute of India, another layer was added in Anurag's rich experience and further expanded his knowledge in issues of biodiversity, habitat conservation and restoration and challenges in park management.

Anurag takes pride in being an avid wildlife lover, tiger fanatic, photo documenter and uses his spare time in guiding other wildlife lovers, being their group leader and safari escort.